



10801 N. 24th. Ave. Suite #103  
Phoenix, AZ 85029  
Phone 602-861-6984 Fax 602-588-9440  
Innovative High Tech Solutions and Support  
for Leading Edge Aerospace Companies

## **LTEPIC-25**

### Primus Epic LAN Interface Kit

#### Software Driver Installation Instructions



For a complete list of products, services, this manual,  
and the latest downloadable software drivers please  
visit

<http://www.icsaero.com/ICS/html/ltepic-25.html>



10801 N. 24th. Ave. Suite #103  
Phoenix, AZ 85029  
Phone 602-861-6984 Fax 602-588-9440  
Innovative High Tech Solutions and Support  
for Leading Edge Aerospace Companies

## Before You Continue

This booklet is only for installation in Windows Vista 32-bit. Please note that you must download the latest drivers from the following website:

[http://www.icsaero.com/ICS/LTEPIC-25\\_10Base2\\_Drivers.zip](http://www.icsaero.com/ICS/LTEPIC-25_10Base2_Drivers.zip)

And you should extract them to your C: drive so that the following directory exists: C:\LNT-10TB\WinXP, as this is what is referenced in this booklet.

The instructions here detail the installation for Windows Vista machines. This setup is unique to Windows Vista and is provided as a courtesy to our customers only. **Windows Vista is not officially supported at this time.**

## WINDOWS Vista Installation

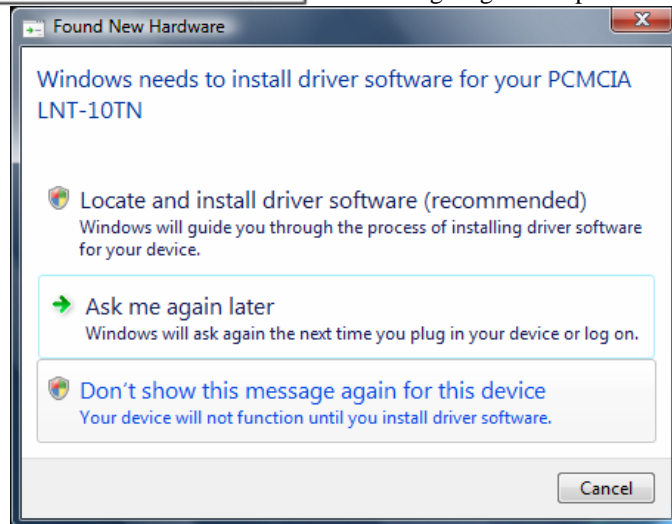
The following document details the installation of the ICS supplied Ethernet adapter for Primus Epic, part number LTEPIC-25.

To install the Ethernet adapter, power on your PC and log in. After you are at your desktop insert the PC-Card into the correct slot. Then the following dialog will be seen:

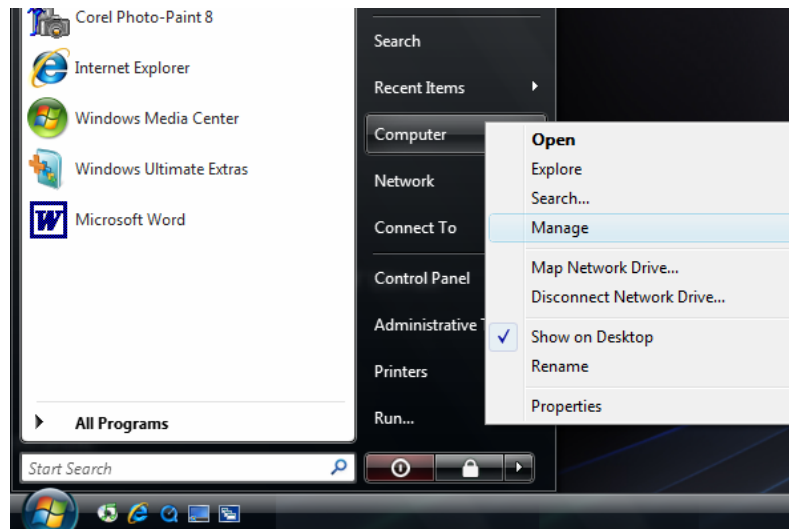
Note that the pictures may differ somewhat from the dialog boxes seen in your installation; minor differences can be safely ignored.



10801 N. 24th. Ave. Suite #103  
Phoenix, AZ 85029  
Phone 602-861-6984 Fax 602-588-9440  
Innovative High Tech Solutions and Support  
for Leading Edge Aerospace Companies



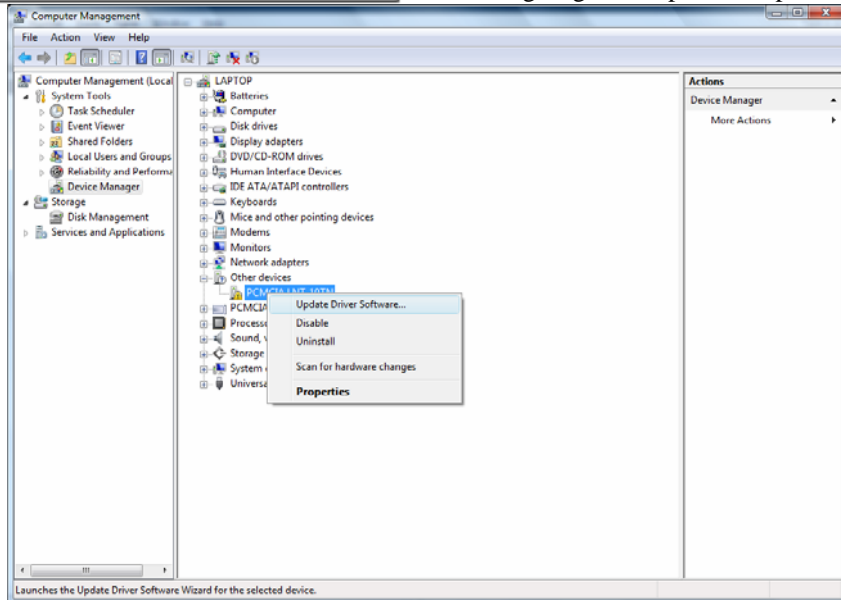
Step 1. When the found new hardware wizard comes up, select “Don’t show this message again for this device.” **When User Account Control comes up, select “continue”.**



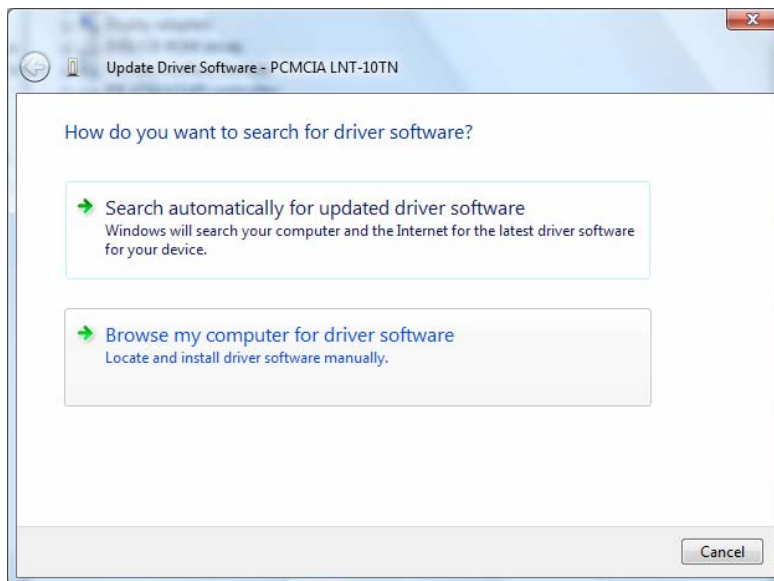
Step 2. Go to the Start button, and click with the right mouse button on “Computer”. Select “Manage”.



10801 N. 24th. Ave. Suite #103  
Phoenix, AZ 85029  
Phone 602-861-6984 Fax 602-588-9440  
Innovative High Tech Solutions and Support  
for Leading Edge Aerospace Companies



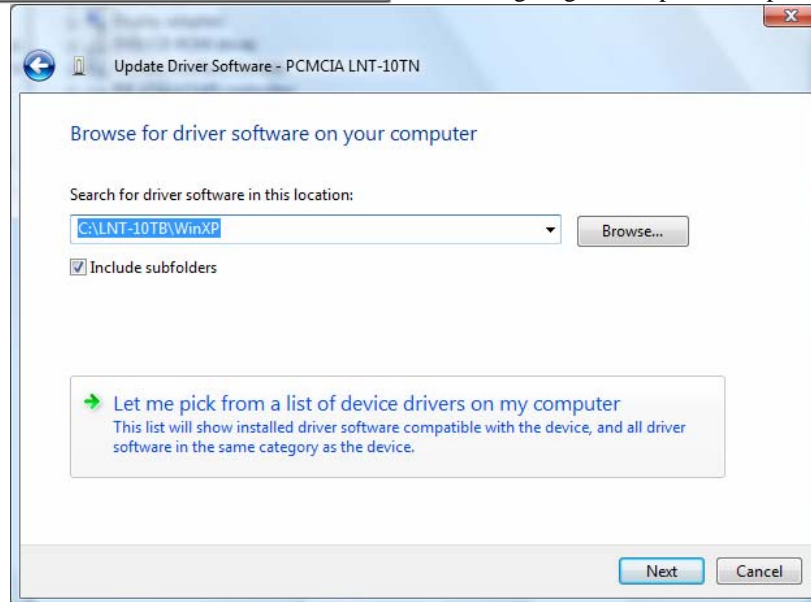
Step 3. Select Device Manager, and go to the device “PCMCIA LNT-10TN”. Right-Click and select “Update Driver Software...”



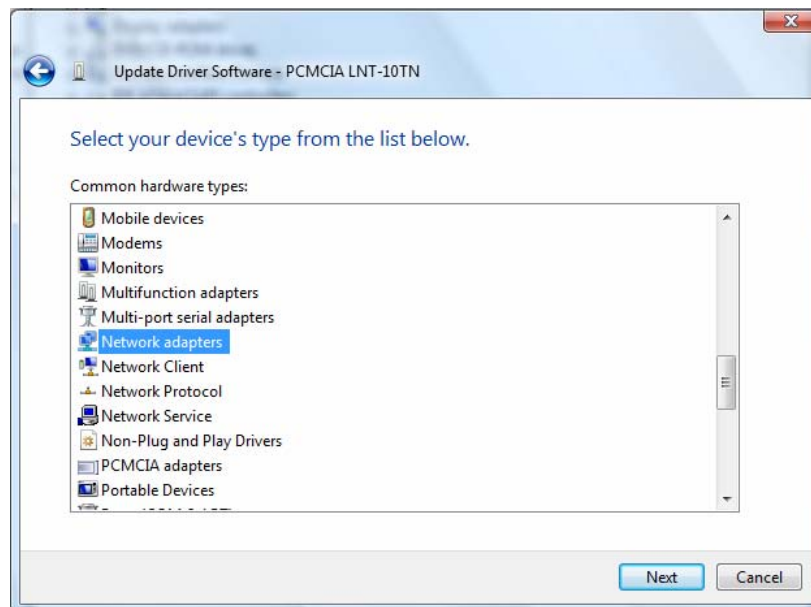
Click on “Browse my computer for driver software.”



10801 N. 24th. Ave. Suite #103  
Phoenix, AZ 85029  
Phone 602-861-6984 Fax 602-588-9440  
Innovative High Tech Solutions and Support  
for Leading Edge Aerospace Companies



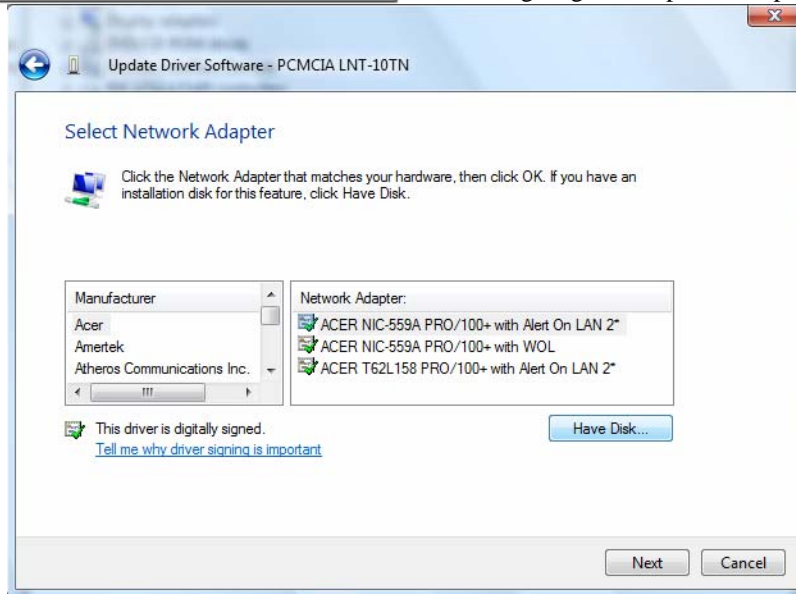
Step 4. Select “Let me pick from a list of device drivers on my computer.”



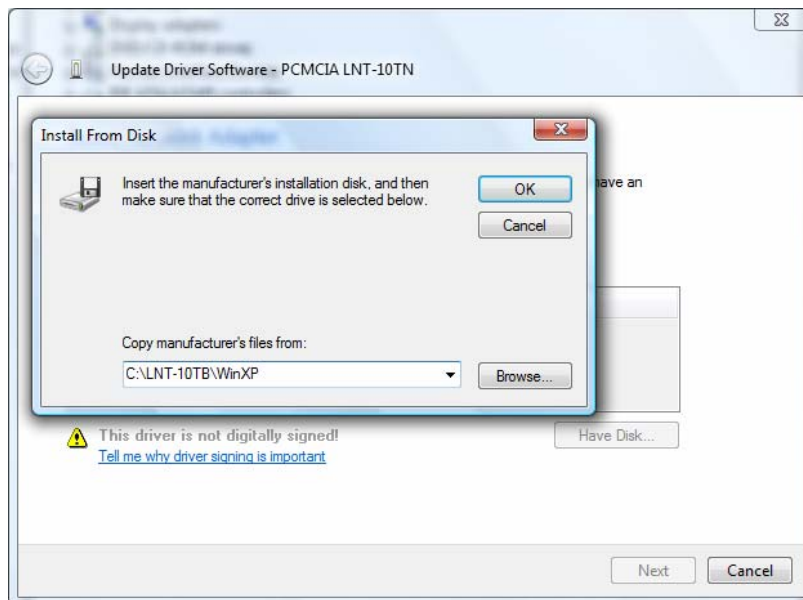
Select “Network adapters” from the list and click on “Next”.



10801 N. 24th. Ave. Suite #103  
Phoenix, AZ 85029  
Phone 602-861-6984 Fax 602-588-9440  
Innovative High Tech Solutions and Support  
for Leading Edge Aerospace Companies



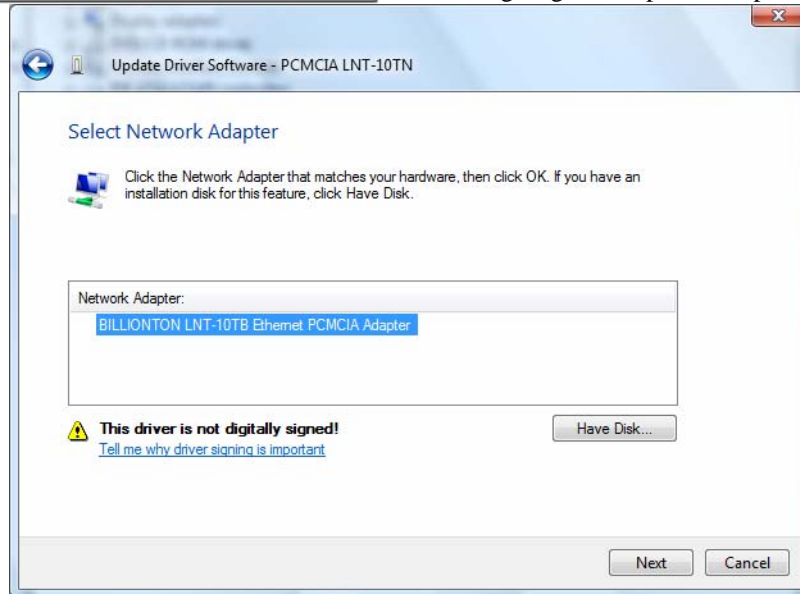
Click on "Have Disk..."



Type in the location of the drivers you downloaded and expanded...  
(Usually: C:\LNT-10TB\WinXP)  
Click on OK



10801 N. 24th. Ave. Suite #103  
Phoenix, AZ 85029  
Phone 602-861-6984 Fax 602-588-9440  
Innovative High Tech Solutions and Support  
for Leading Edge Aerospace Companies



Select The Billionton Adapter, Click on Next  
Click on Yes



When Windows Security Comes Up, Select "Install this driver software anyway"

Step 5. Now that you've installed the driver, you need to setup it's IP address, and subnet mask. Please contact your system administrator for the proper information for your system.

Once this is done, you have set up your EPICLAN kit successfully.

Thank you for your purchase.



10801 N. 24th. Ave. Suite #103  
Phoenix, AZ 85029  
Phone 602-861-6984 Fax 602-588-9440  
Innovative High Tech Solutions and Support  
for Leading Edge Aerospace Companies

**Priced at: \$94.00 U.S.Dollars**

Visa, Master Card, AMX and Discover Accepted  
As well as Wire Transfers

NET terms on approved credit.

**For more information or sales contact:**

Innovative Control Systems, Inc.  
10801 N. 24th Ave. Suite 103.  
Phoenix, AZ 85029 U.S.A.

+01 602-861-6984 Voice  
+01 602-588-9440 FAX

[www.ICSAERO.com](http://www.ICSAERO.com)  
[Sales@ICSAERO.com](mailto:Sales@ICSAERO.com)

