

# **LTEPIC-25**

## **Primus Epic LAN Interface Kit**

### Software Driver Installation Instructions



For this manual, and the latest downloadable software drivers

See: <http://www.icsaero.com/ICS/html/ltepic-25.html>

#### NOTE !

Windows XP users, please download the XP drivers from the above address. The enclosed disk does not contain them.

# WINDOWS XP Installation

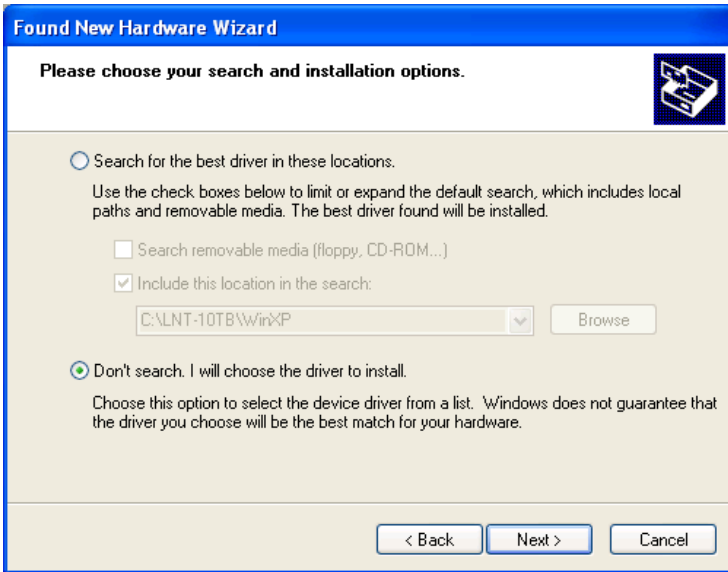
The following document details the installation of the ICS supplied Ethernet adapter for Primus Epic, part number LTEPIC-25.

The instructions here detail the installation for Windows XP machines; the setup is similar for all Microsoft operating systems. Any known differences will be mentioned as needed. Note that the pictures may differ somewhat the dialog boxes seen in your installation; minor differences can be safely ignored.

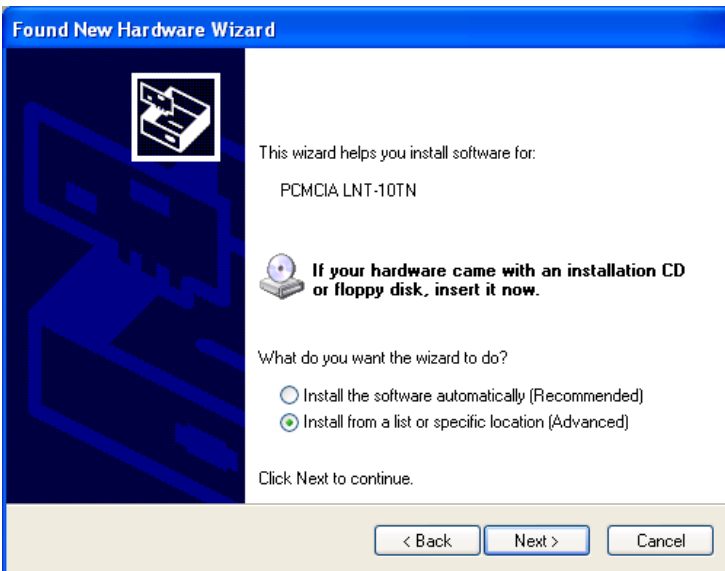
To install the Ethernet adapter, insert the PC-Card into the correct slot before powering the PC. After power is applied and the user logs in, the following dialog will be seen:



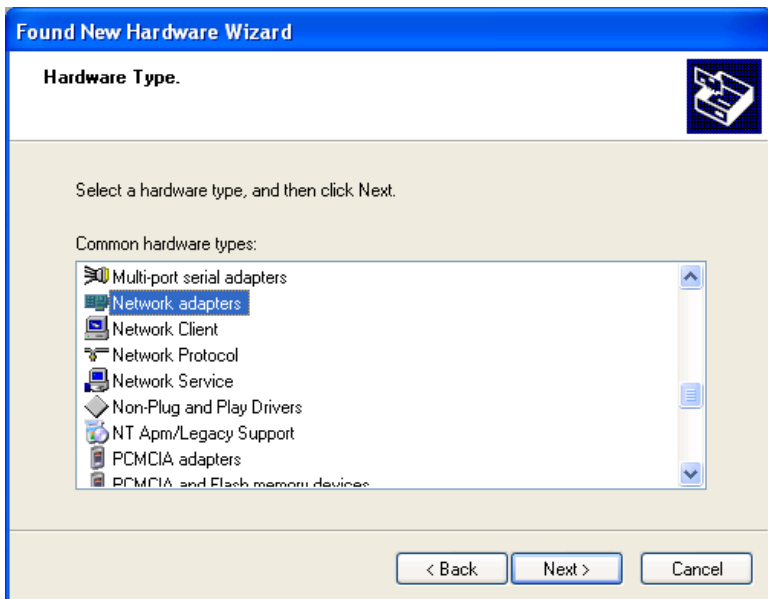
Click on No, not this time, and Next.



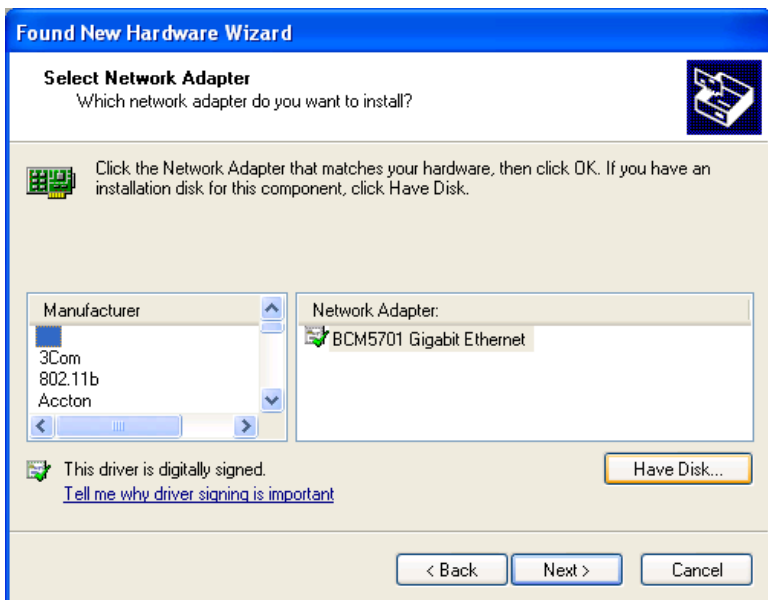
Select Don't Search, I will choose the driver to install and click on Next



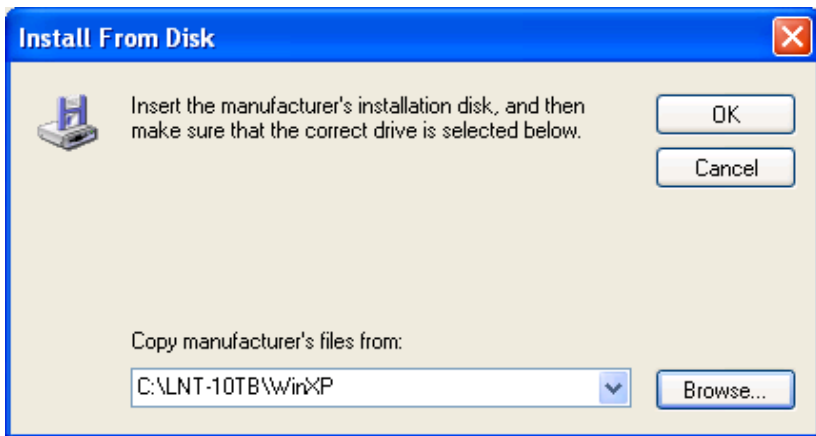
Click on Install from a list or specific location and click on Next.



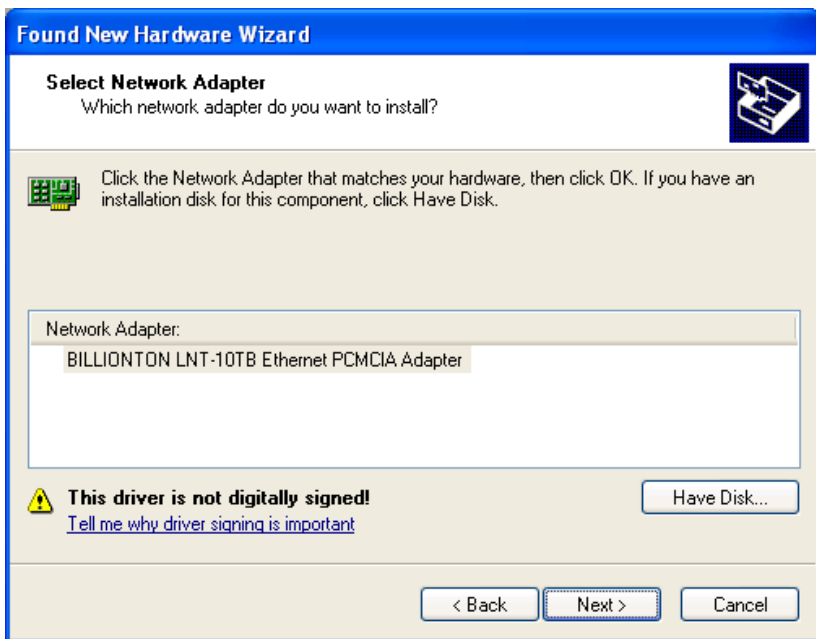
Select Network adapters and click on Next.



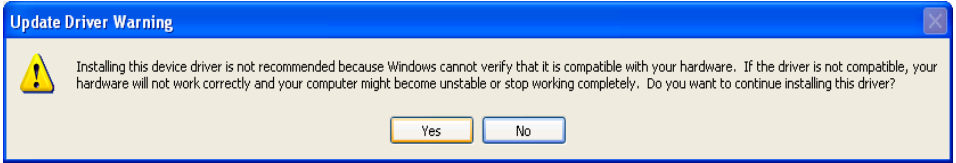
Click on Have Disk...



Type in the directory path to the Windows XP drivers that you downloaded. For example: C:\LNT-10TB\WinXP And click on OK



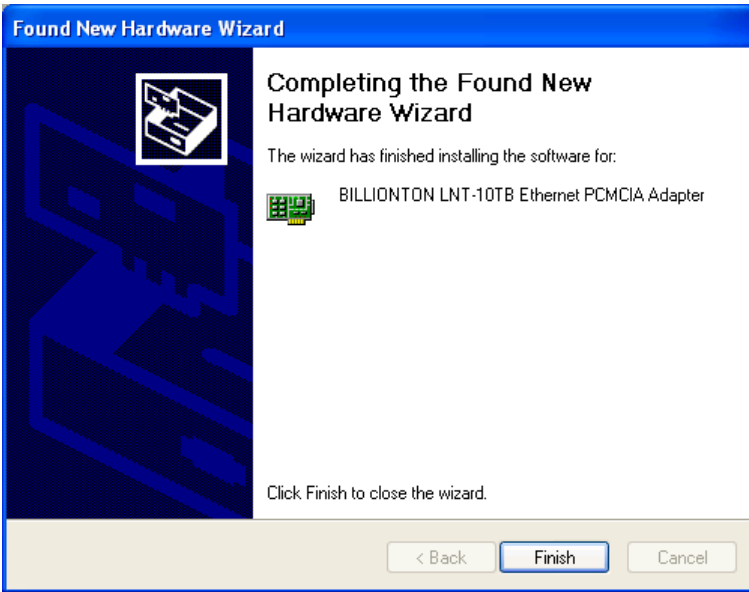
When this screen appears, Be sure to **SELECT** Billionton LNT-10TB & click on **Next >**. **Do Not simply click next.**



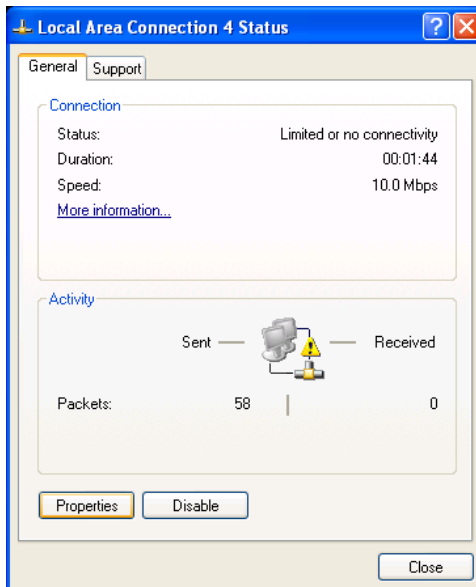
Click on Yes



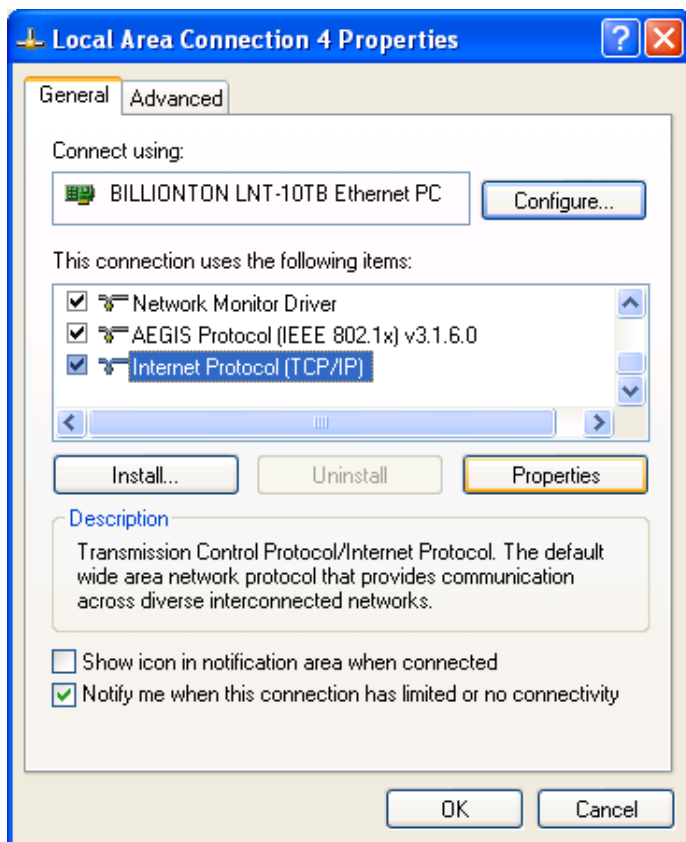
Click on Continue Anyway



Click on Finish



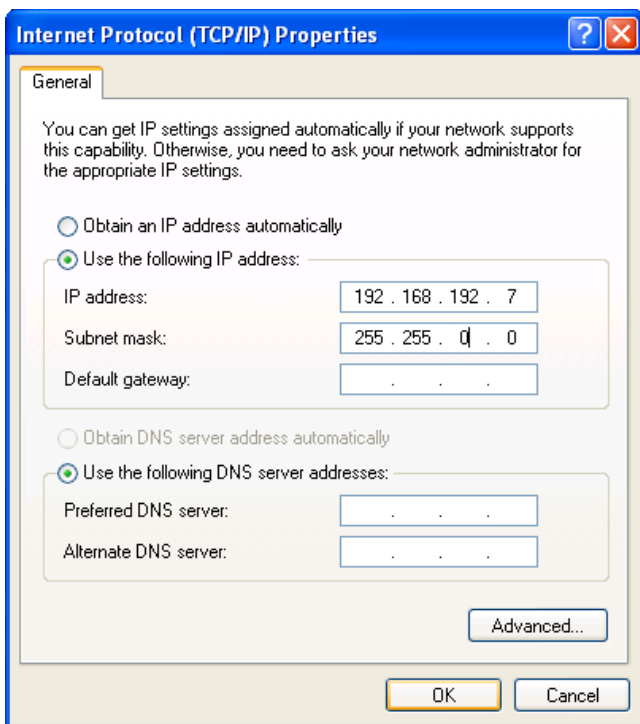
Get here by Right-Clicking on My Network Places on the desktop and clicking on Properties.



Scroll down and select Internet Protocol (TCP/IP)

Click on Properties.

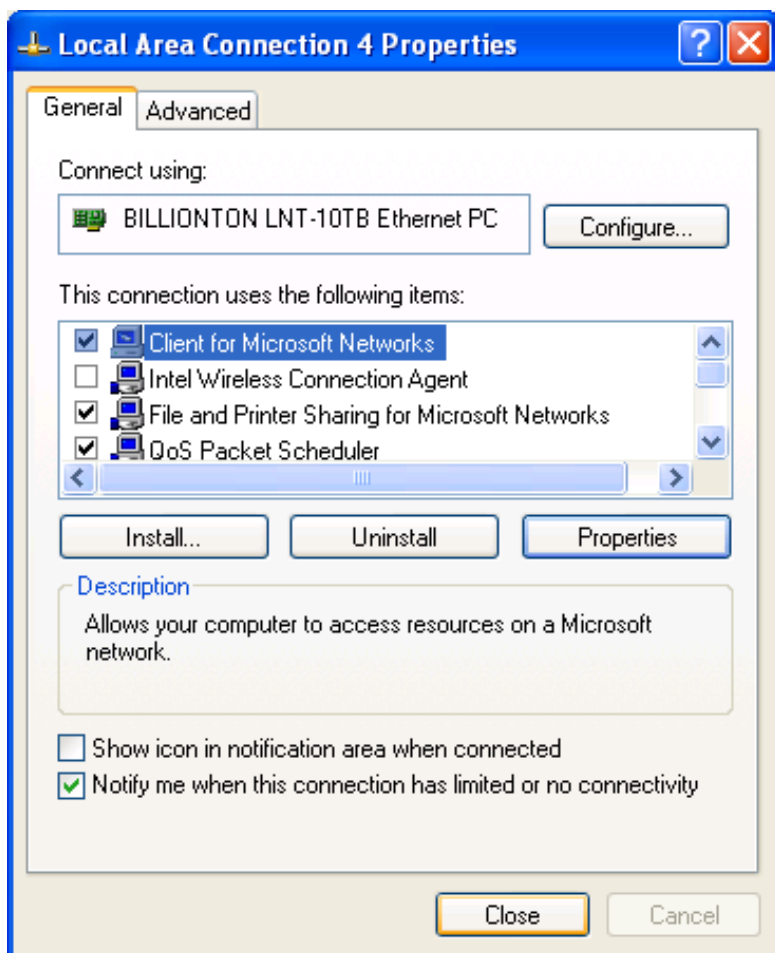




Select "Use the following IP Address:"

And type in the appropriate address and subnet mask. If you don't know the appropriate address and subnet mask, contact your systems administrator.

When finished, click on OK.



Click on Close

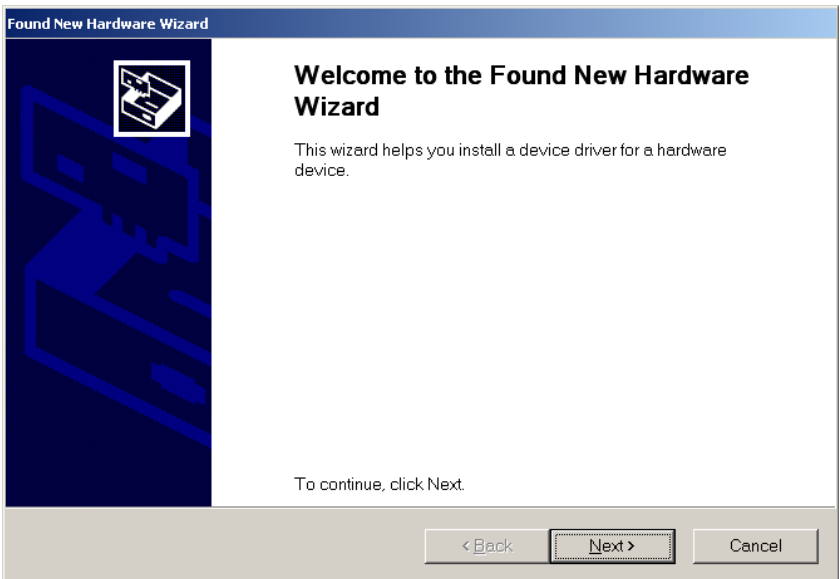
Your 10base-T Network Card Installation is complete and the card is ready to use.

# WINDOWS 2000 Installation

The following document details the installation of the ICS supplied Ethernet adapter for Primus Epic, part number LTEPIC-25.

The instructions here detail the installation for Windows 2000 machines; the setup is similar for all Microsoft operating systems. Any known differences will be mentioned as needed. Note that the pictures may differ somewhat the dialog boxes seen in your installation; minor differences can be safely ignored.

To install the Ethernet adapter, insert the PC-Card into the correct slot before powering the PC. After power is applied and the user logs in, the following dialog will be seen:



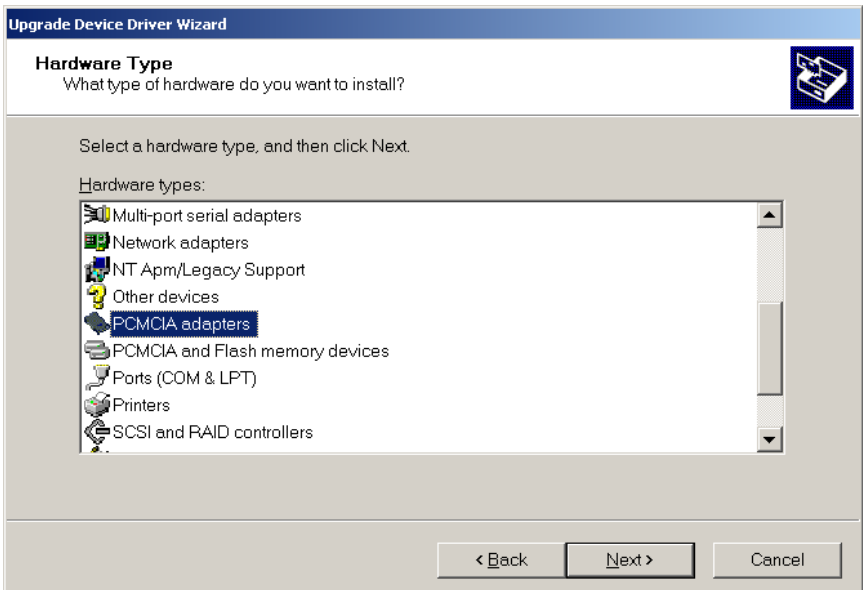
**Figure 1 Found New Hardware**

Pressing **Next>** will advance to the detail dialog:



**Figure 2 Found New Hardware - Details**

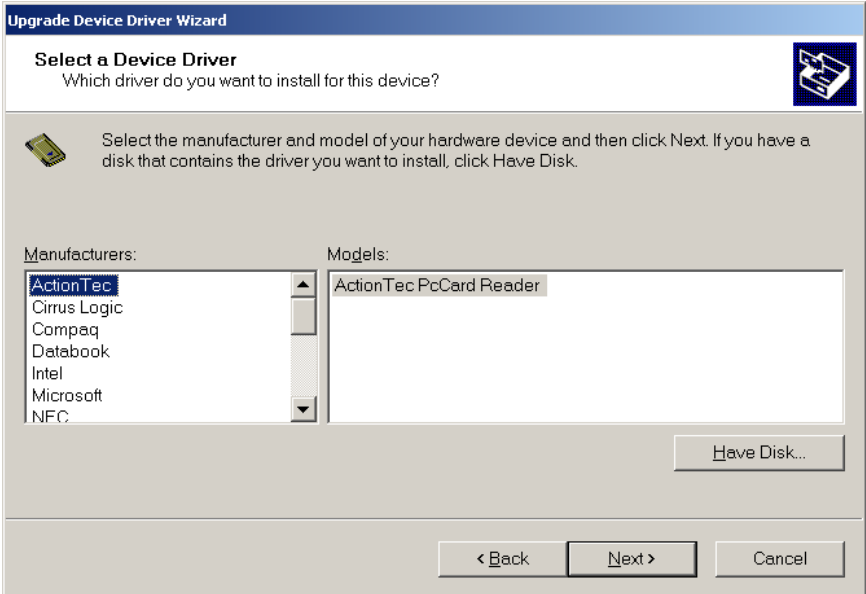
Select the choice “Display a list of the known drivers for this device so that I can choose a specific driver”. The recommended choice will NOT work. After pressing **Next>**, the following dialog will be seen.



**Figure 3 Choose Hardware**

Scroll down the list until the “PCMCIA Adapter” choice is found, and select it. Double-clicking or pressing **Next>** will advance to the next dialog.

Once the Hardware Type is identified, the following dialog will be shown. Press **“Have Disk”** to continue.

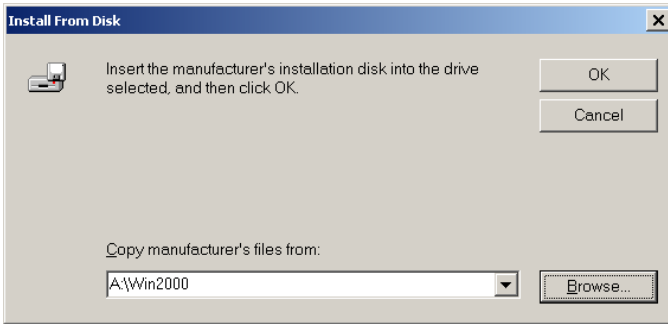


**Figure 4 Select a Device Driver**

The system will prompt for the location of the drivers. Please ensure the floppy disk that comes with the adapter is inserted into the PC's floppy drive, and choose the directory from the following list:

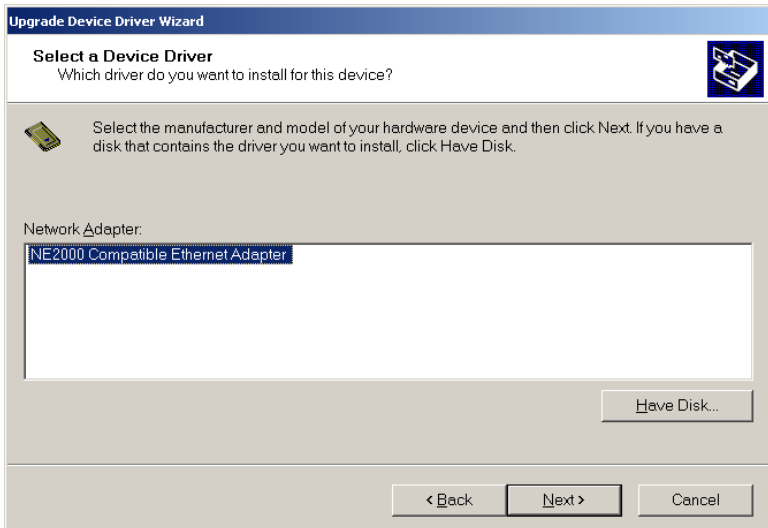
Operating System	Directory on floppy
Windows '95	A:\Win95
Windows '98	A:\Win98
Windows '98 ME (Millennium Edition)	A:\Win98_me
Windows NT 4	A:\Winnt40
Windows NT 2000	A:\Win2000
Windows XP	A:\Win2000

For the example below, the system is Windows XP. Press **OK** to continue.



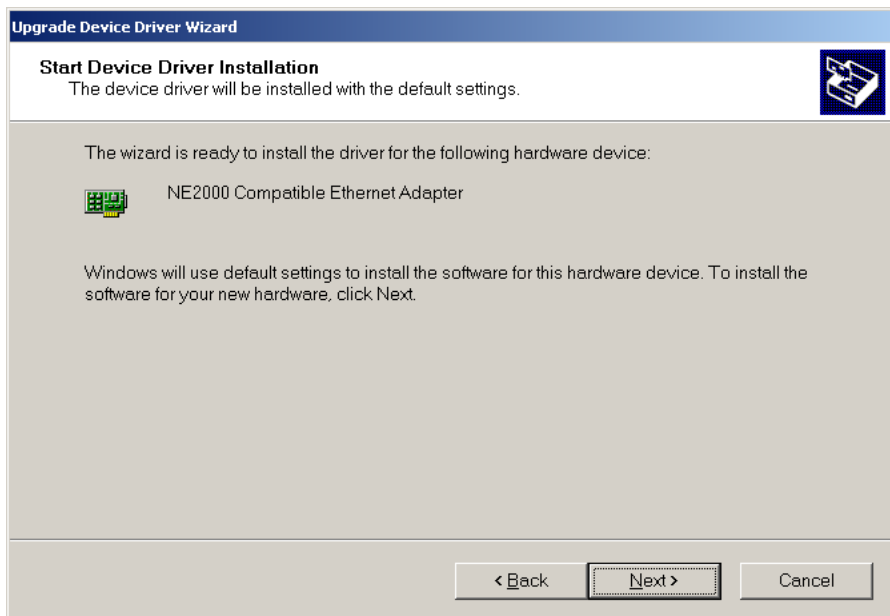
**Figure 5 Choose Directory**

After the system verifies the driver on the floppy, the dialog will update as seen below. Press **Next>** to continue.



**Figure 6 Select a Device Driver, Part 2**

The system will verify your choices – a dialog similar to the one below will be displayed. Press **Next>** to start the installation.



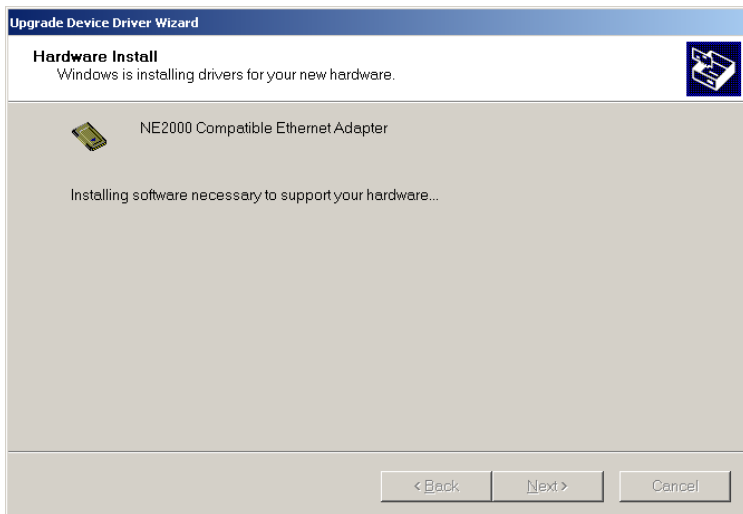
**Figure 7 Start Installation**

Microsoft has not digitally signed the drivers for this network adapter. The system will show the following dialog in response to this fact. Press **Yes** to continue. For Windows XP systems, the choice is “**Continue Anyway**”.



**Figure 8 Digital Signature**

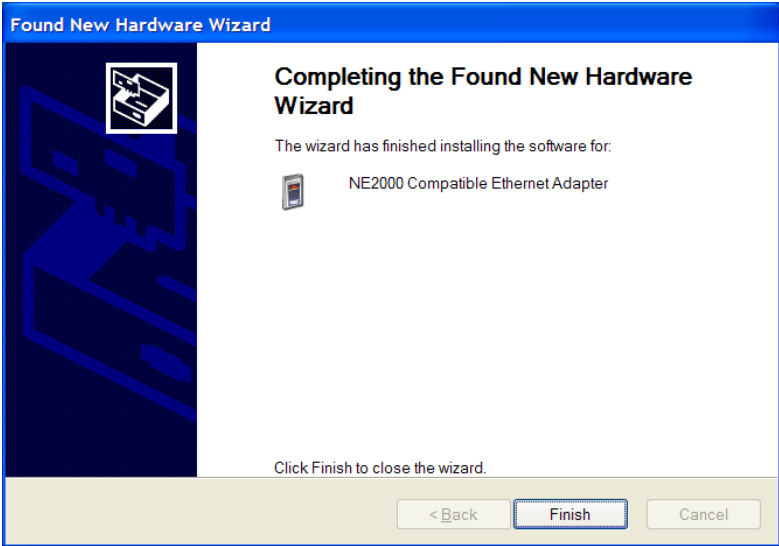
At this point the files from the floppy will be copied and installed to the PC. A dialog similar to this one will show the work is in progress.



**Figure 9 Installing...**

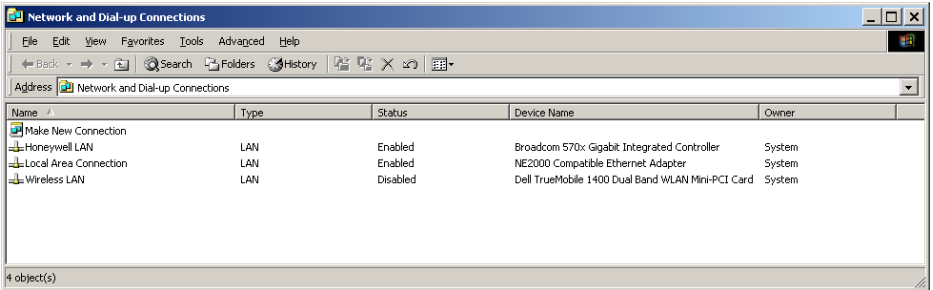


Once complete, the system will show a dialog similar to the following. Note that the PC does not need to reboot after installation



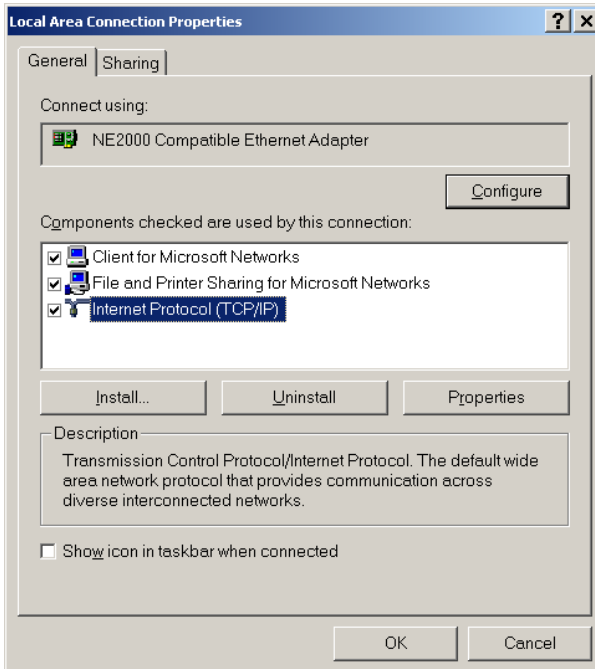
**Figure 10 Hardware Installation Complete**

At this point the hardware is installed. However, the network settings must still be established before the adapter will work properly. The network settings are found on the Control Panel under a option called “Network and Dial-Up Connections” (called “Network Connections” on Windows XP).



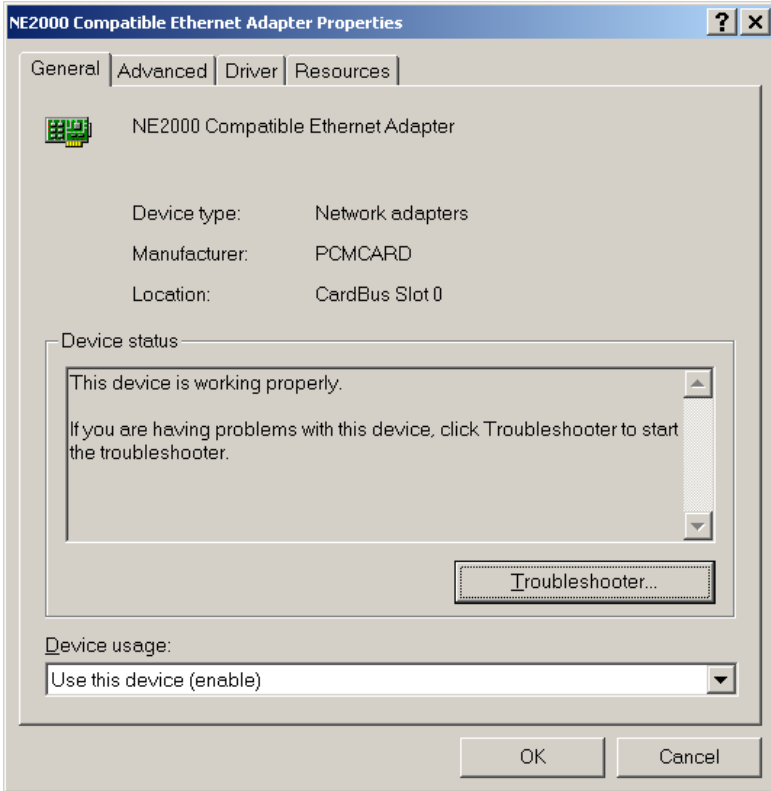
**Figure 11 Network Connections**

Right-clicking on the “Local Area Connector” (with a device name of “NE2000 Compatible Ethernet Adapter”) and choosing **Properties** will allow our setup to continue. The following dialog will be seen.



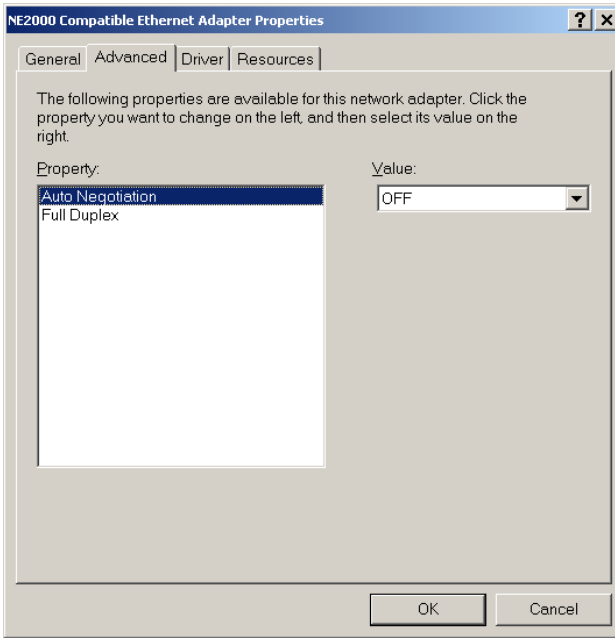
**Figure 12 Network Properties**

Choosing the “**Configure**” button will allow us to modify the default hardware settings. The following dialog will be seen:



**Figure 13 Configure Hardware**

The settings to be changed are found on the **Advanced** tab, as seen below:



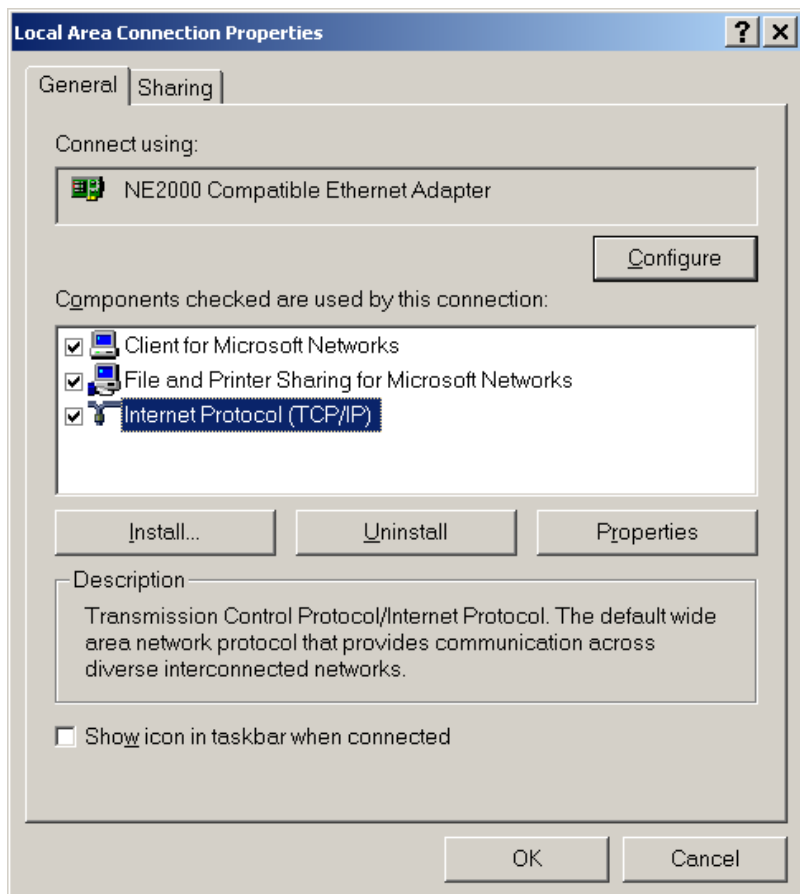
**Figure 14 Configure Hardware - Advanced**

Both options are defaulted to OFF, but need to be set to ON.

Auto Negotiation            ON

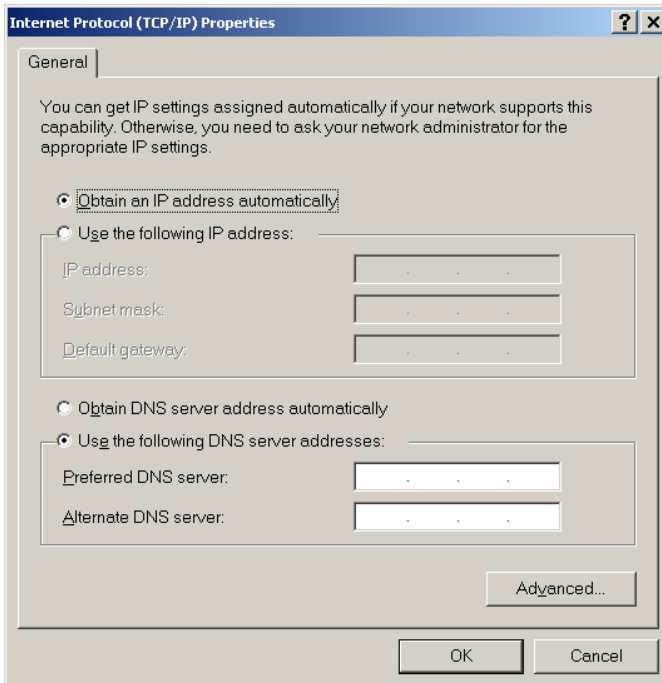
Full Duplex                    ON

Press OK after the settings have been changed. You will be returned to the Properties page, as seen here:



**Figure 15 TCP/IP Properties**

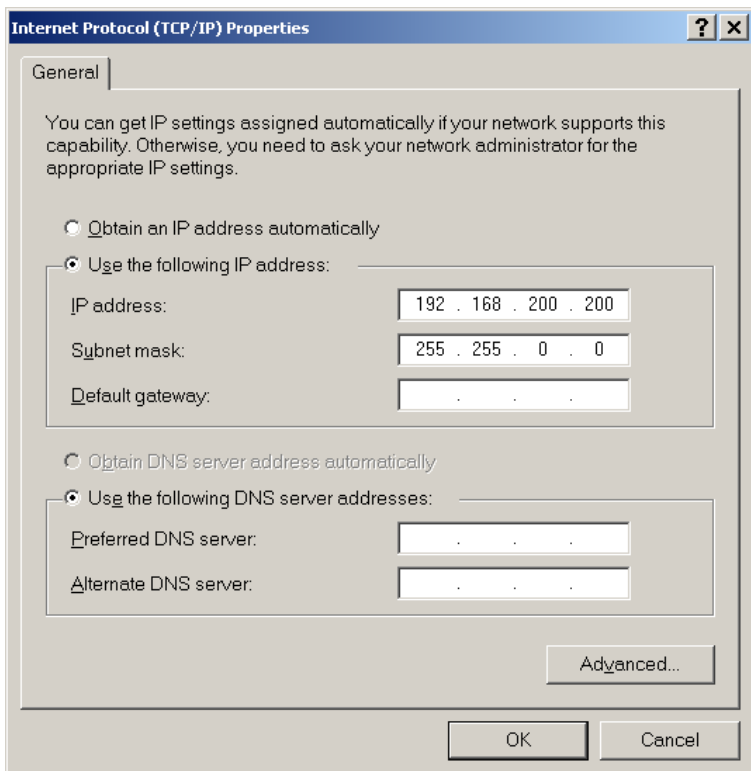
Ensure “Internet Protocol (TCP/IP) is selected, and press Properties. The following dialog will be seen:



**Figure 16 TCP/IP Properties**

The default use of the automatic IP address (DHCP) must be changed to a manual setting. Select the “Use the following IP Address” option, and enter the proper IP address. Any chosen address must fall within the range of 192.168.200.192 .. 192.168.200.254 (inclusive). The “Subnet Mask” must be set to “255.255.0.0”.

Your final network settings should appear similar to the following:



**Figure 17 Network Settings**



10801 North 24th Ave. Suite 103, Phoenix, AZ 85029  
602-861-6984 Voice 602-588-9440 FAX  
WWW.ICSAERO.COM  
Innovative High Tech Solutions and Support for Leading Edge Aerospace Companies

**Priced at: \$94.00 U.S.Dollars**

Visa, Master Card, AMX and Discover Accepted  
As well as Wire Transfers

NET terms on approved credit.

**For more information or sales contact:**

**Innovative Control Systems, Inc.  
10801 N. 24th Ave. Suite 103.  
Phoenix, AZ 85029 U.S.A.**

**+01 602-861-6984 Voice  
+01 602-588-9440 FAX**

**www.ICSAERO.com  
Sales@ICSAERO.com**

